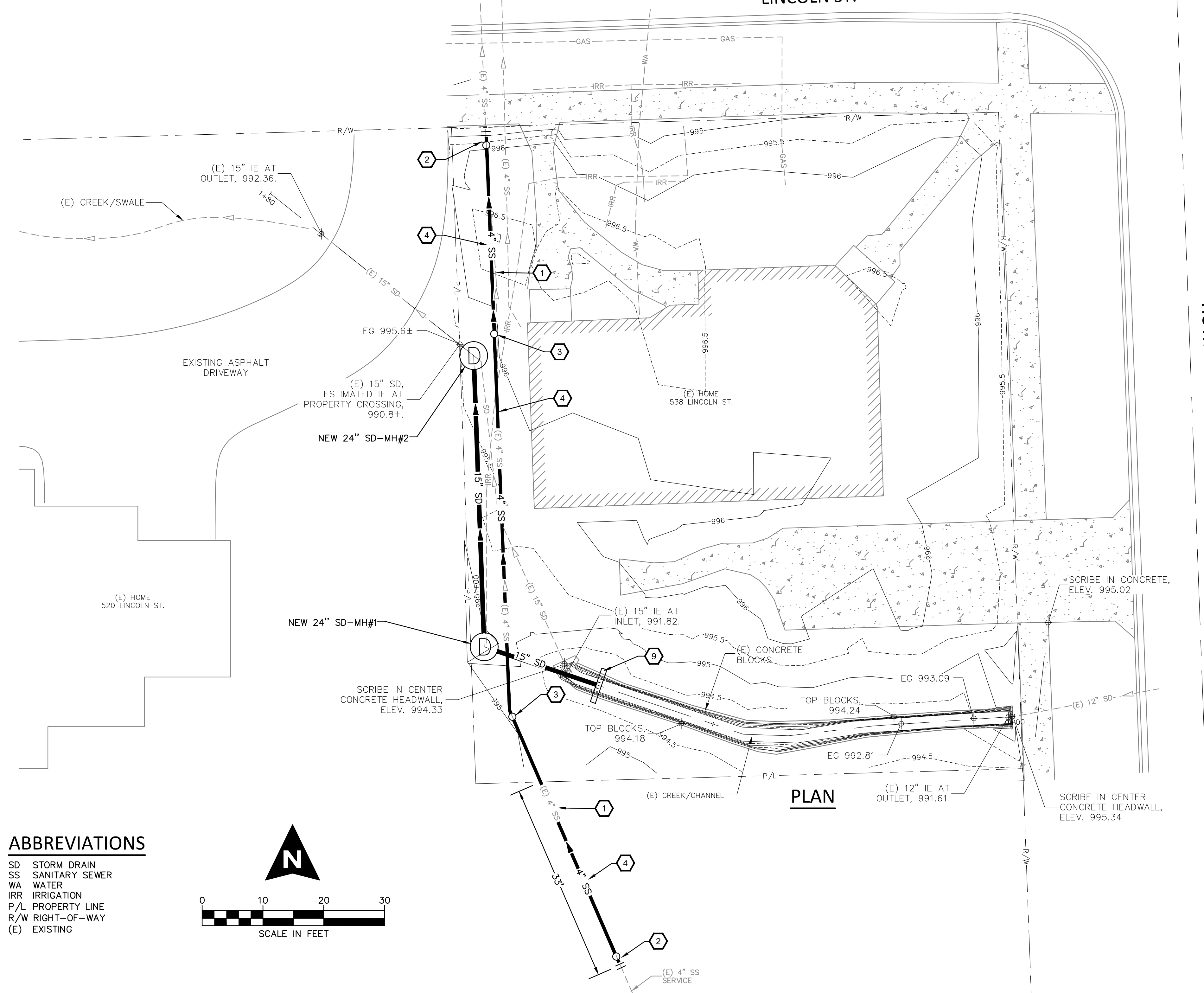
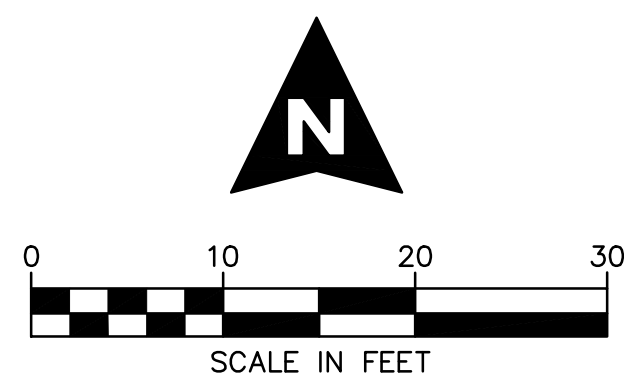


LINCOLN ST.



ABBREVIATIONS

- SD STORM DRAIN
- SS SANITARY SEWER
- WA WATER
- IRR IRRIGATION
- P/L PROPERTY LINE
- R/W RIGHT-OF-WAY
- (E) EXISTING



PLAN

PIPE BEDDING & BACKFILL NOTES

- BED PIPING ON AT LEAST 4-INCHES OF COMPACTED CRUSHED GRAVEL OR SAND. TO CONTROL LATERAL PIPE DEFLECTION, PROVIDE HAUNCHING UP TO THE SPRING-LINE OF THE PIPE. WORK BEDDING MATERIAL UNDER AND ON THE SIDES OF THE PIPE OR APPLIANCE TO ENSURE SIDE SUPPORT. LIGHT COMPACTION IN LOOSE LIFTS, NOT TO EXCEED 6-INCHES HIGH, SHOULD BE USED TO ABOUT 12-INCHES ABOVE THE PIPE.
- BACKFILL THE PIPE FROM THE SPRING-LINE TO 12-INCHES ABOVE THE CROWN USING MATERIAL WITH SOIL PARTICLE SIZES NO LARGER THAN 3/8-INCH. COMPACT THE FILL AT 85-90% OF MAXIMUM DRY DENSITY PER ASTM D-1557. FILL THE REMAINDER OF THE TRENCH WITH ANY STRUCTURAL FILL COMPACTED TO 92% OF MAXIMUM DRY DENSITY PER ASTM-1557 TO WITHIN 2- FEET OF THE SURFACE AND 95% WITHIN 2- FEET OF THE SURFACE.

CULVERT PIPE NOTES

- VERIFY ALL MEASUREMENTS, ELEVATIONS, AND STATIONS IN FIELD.
- SOIL COVER FOR PIPING TO BE 18-INCHES MINIMUM.
- PIPING TO BE 15" SDR-26 SEWER PIPE.

SEWER PIPE NOTES

- CLEAN-OUTS TO BE PLACED AT EVERY DIRECTION CHANGE AND CONNECTION, AND EVERY 100- FEET.
- SOIL COVER FOR PIPING TO BE 18-INCHES MINIMUM.
- PIPING TO BE 4" SDR-26 SEWER PIPE.

SURVEY NOTES

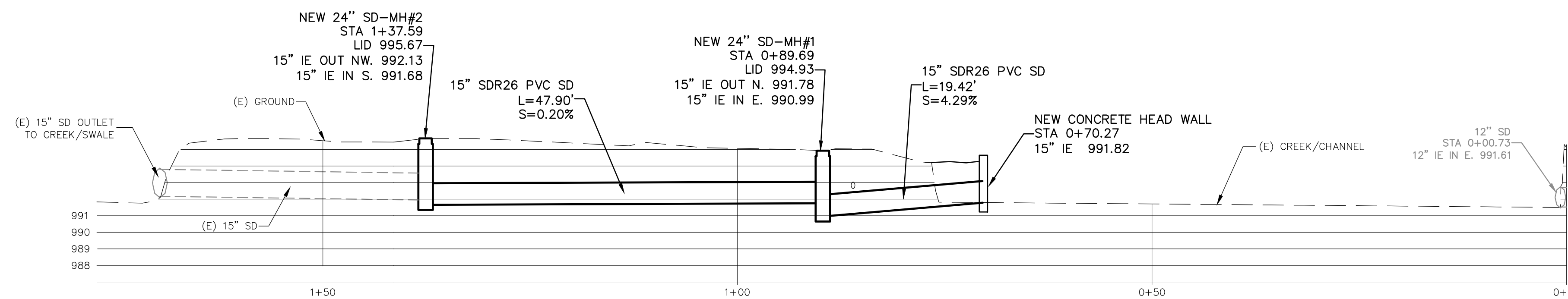
- SURVEY TO LOCATIONS AND ELEVATIONS OF CULVERTS.
- SURVEY SEWER LINE AT EACH DIRECTION CHANGE AND NO MORE THAN 30-FOOT CENTERS.

KEYED CONSTRUCTION NOTES

- REMOVE AND WASTE EXISTING 4" SEWER SERVICE PIPING.
- CONNECT NEW 4" SEWER SERVICE PIPING TO EXISTING SEWER SERVICE PIPING WITH A NEW CLEAN-OUT. DIG & VERIFY EXISTING PIPE LOCATION, DEPTH AND PIPE MATERIAL.
- NEW 4" SEWER SERVICE CLEAN-OUT.
- NEW 4" SEWER SERVICE PIPING SHALL BE CONSTRUCTED WITH A MINIMUM 1% PIPE SLOPE. FIELD VERIFY PIPE CONNECTION POINTS.
- REMOVE AND WASTE EXISTING CONCRETE DRAINAGE WAY.
- REMOVE AND WASTE EXISTING DRAIN PIPING.
- CONSTRUCT NEW BLOCK HEADWALL. BLOCKS SHALL BE MANORSTONE, RADIUS FACE TAPERED, 6"x 12"x 16" BLOCKS. REMOVE AND WASTE EXISTING. PROVIDE FILL MATERIAL AS NECESSARY.
- SAW-CUT EXISTING ASPHALT. REPLACE ASPHALT.
- NEW CONCRETE HEAD WALL.

GENERAL CONSTRUCTION NOTES

- CONTRACTOR TO LOCATE AND DETERMINE ELEVATION OF THE FOLLOWING PRIOR TO PIPE WORK:
 - START & TERMINATION OF 15" SD CULVERT.
 - START & TERMINATION OF SEWER SERVICE LINE.
 - PROPOSED 15" SD & 4" SS SERVICE CROSSING.
- CONTRACTOR SHALL NOTIFY ENGINEER FOR INSPECTION OF ON-SITE PIPING TO MAKE MODIFICATIONS AS REQUIRED.
- WHERE THE SEWER SERVICE LINE CROSSES THE 15" STORM CULVERT, PROVIDE A 6" SLEEVE AND BACKFILL WITH CDF.



DRAIN PROFILE

SCALE: 1"=10' HORIZ.
1"=5' VERT.

NO.	DATE	DESCRIPTION	BY

538 LINCOLN ST.
WALLA WALLA, WA

LINCOLN CREEK
OPEN CHANNEL REPLACEMENT

WHITE SHIELD, INC.
320 N. 20TH AVENUE
PASCO, WA 99301
PHONE: 509.547.8200
FAX: 509.547.8232

DRAWN BY: SWS	CHECKED BY: MTB
SCALE: AS SHOWN	DATE: 8/22/22
JOB NO: 121-065-01	
DRAWING NAME: 21-119.DWG	

SHEET
1 OF 1